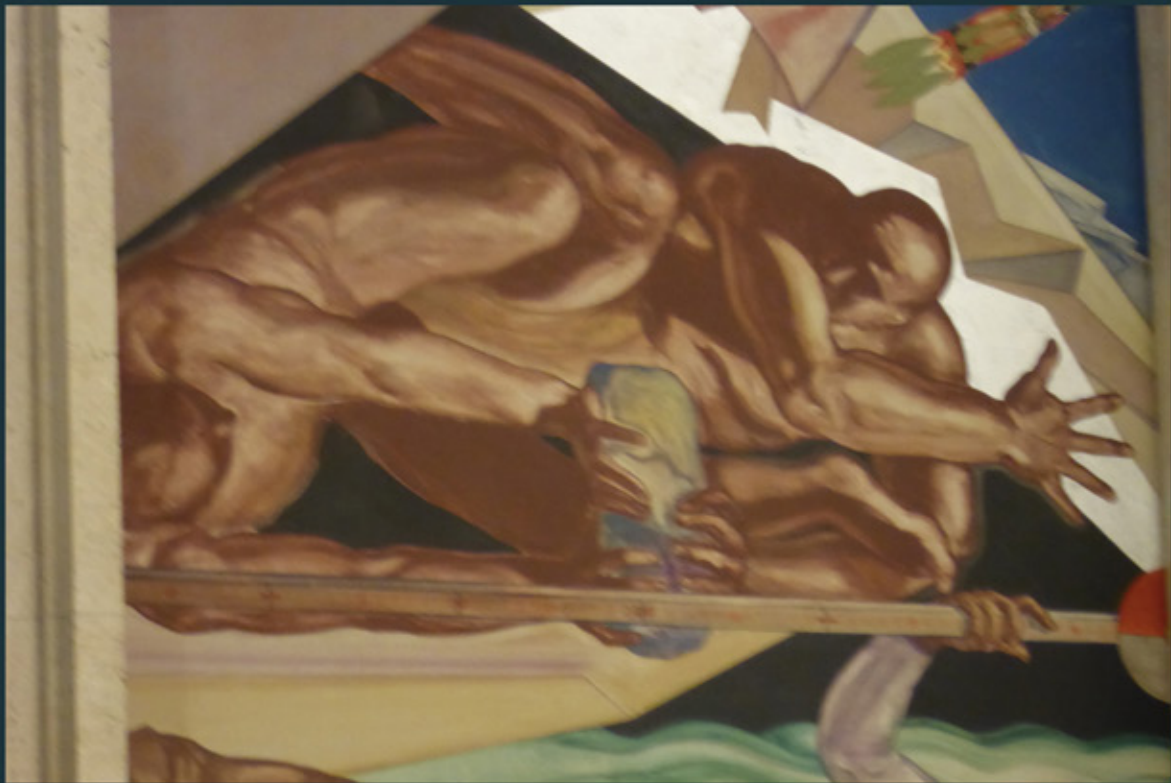


DESCRIPTION OF A CASTLE



THE LOON

Max Ruf

DESCRIPTION
OF
A CASTLE

The Loon, Toronto

april 29 - may 20, 2016

The tree is placed in the centre of the extract. The edges of the leaves fade into the light grey of the foggy background that makes them almost disappear. Mountains seem to rise behind the mirroring surface of the lake that cuts the back layer of the picture in its upper parts.

The distant parts seem to be dipped in white. Displacement removes their colourful strength and gives them the position of silent protagonists that participate on the stage without forcing attention.

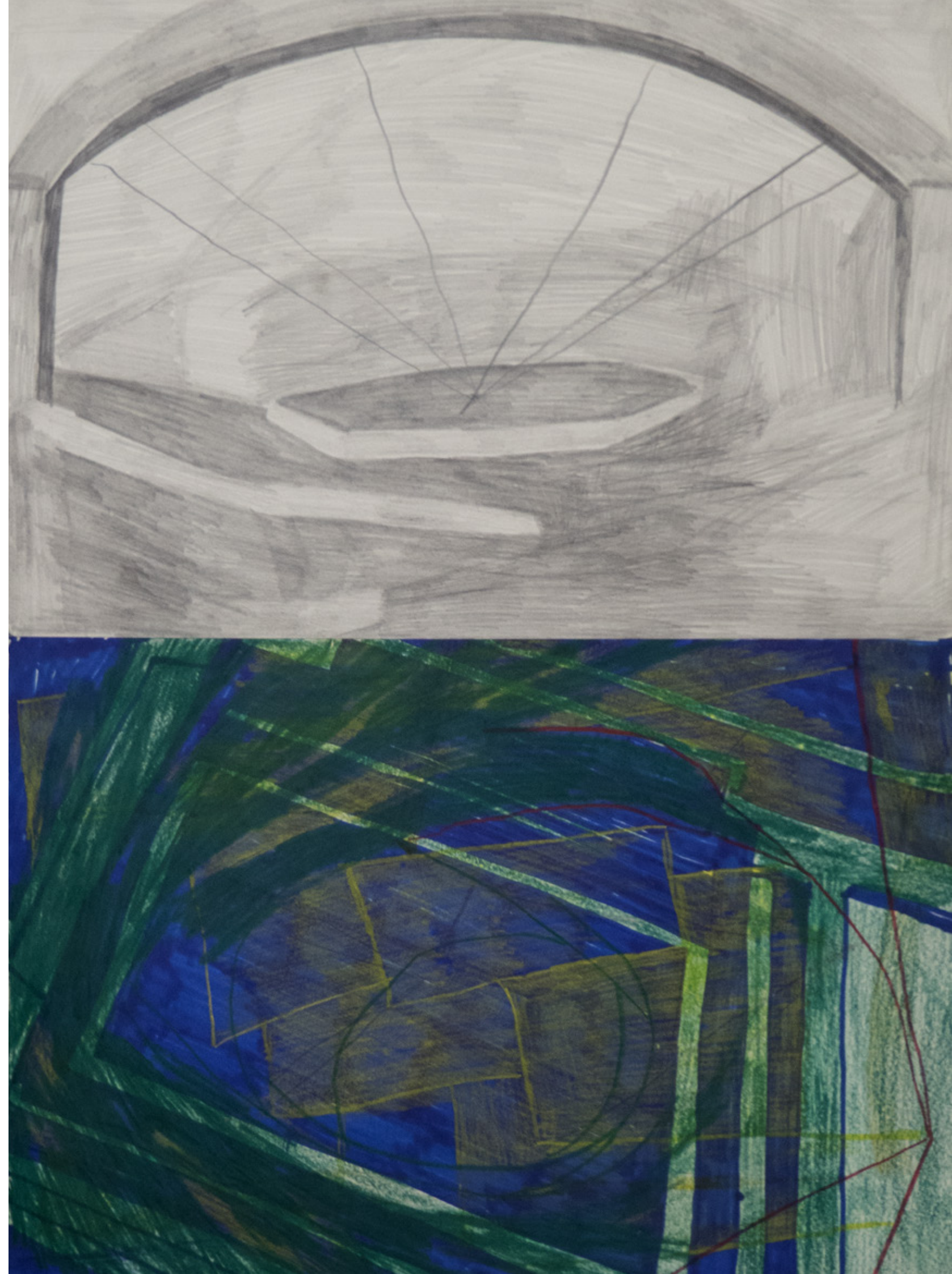
Some turquoise piece of plastic interrupts the diversified structure of the plane. Height and flatness get lost in the bad resolution which supports the artificial appearance of the scene.

Then everything grey. Rocky. Some green. Landscape. A figure, completely dipped into white, is placed in the centre of the hill.

All zoomed. Obviously in order to receive more information about this shining white statue. Standing on the far hill with its holy appearance and the task of surveillance.

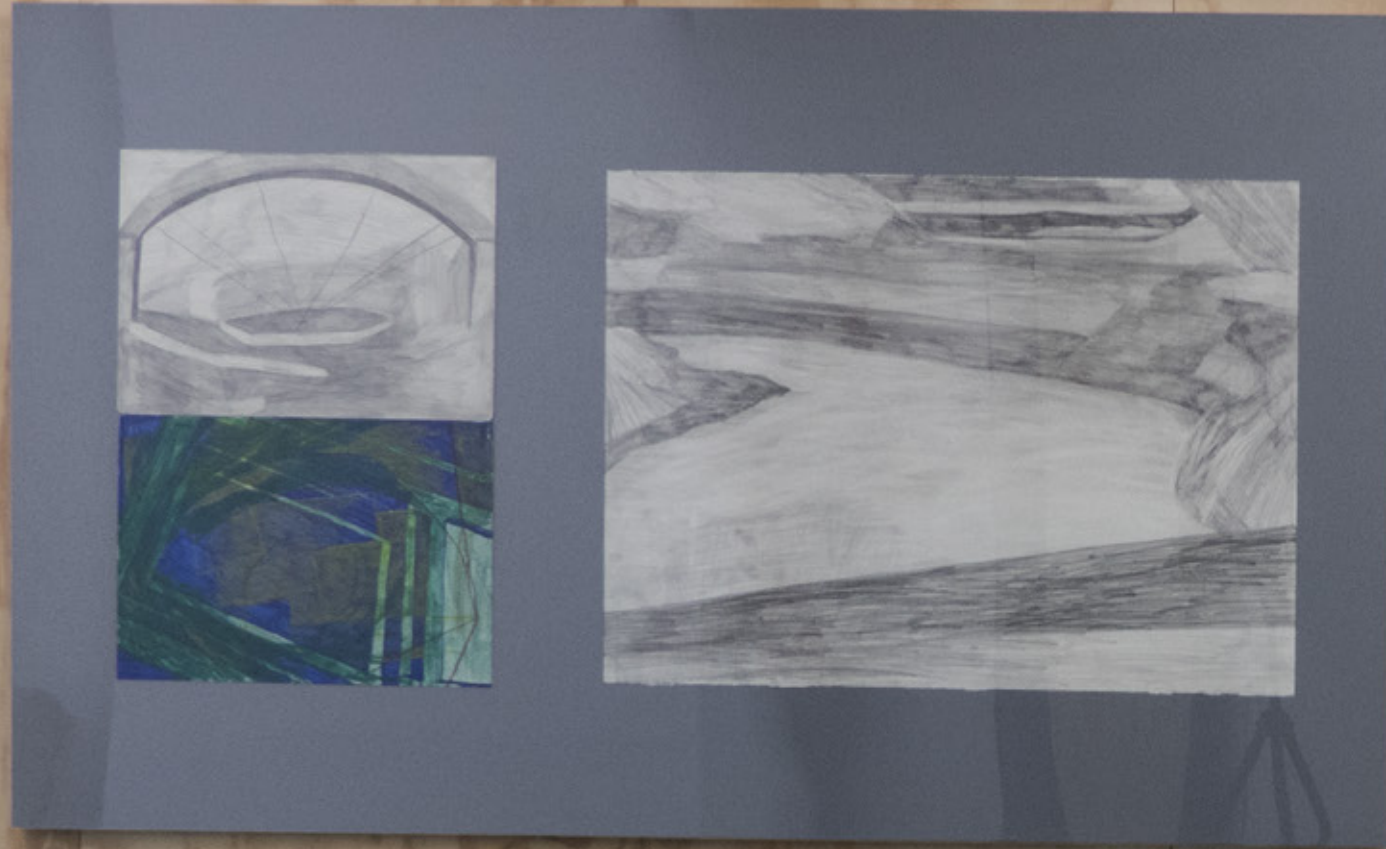
But as the aperture changes, the resolution changes and the white minder of the greyish cold landscape almost gets lost in the fading - hillside to nowhere. Still visible, still centred, losing size.

Description of a castle:









Board II / 3 Drawings, pencil, colour pencil and felt pen on paper,
glass, mdf, tape, 89 x 165 cm, 2016

Board III / 8 Drawings, pencil, colour pencil and felt pen on paper, tape, 136 x 63 cm, 2016

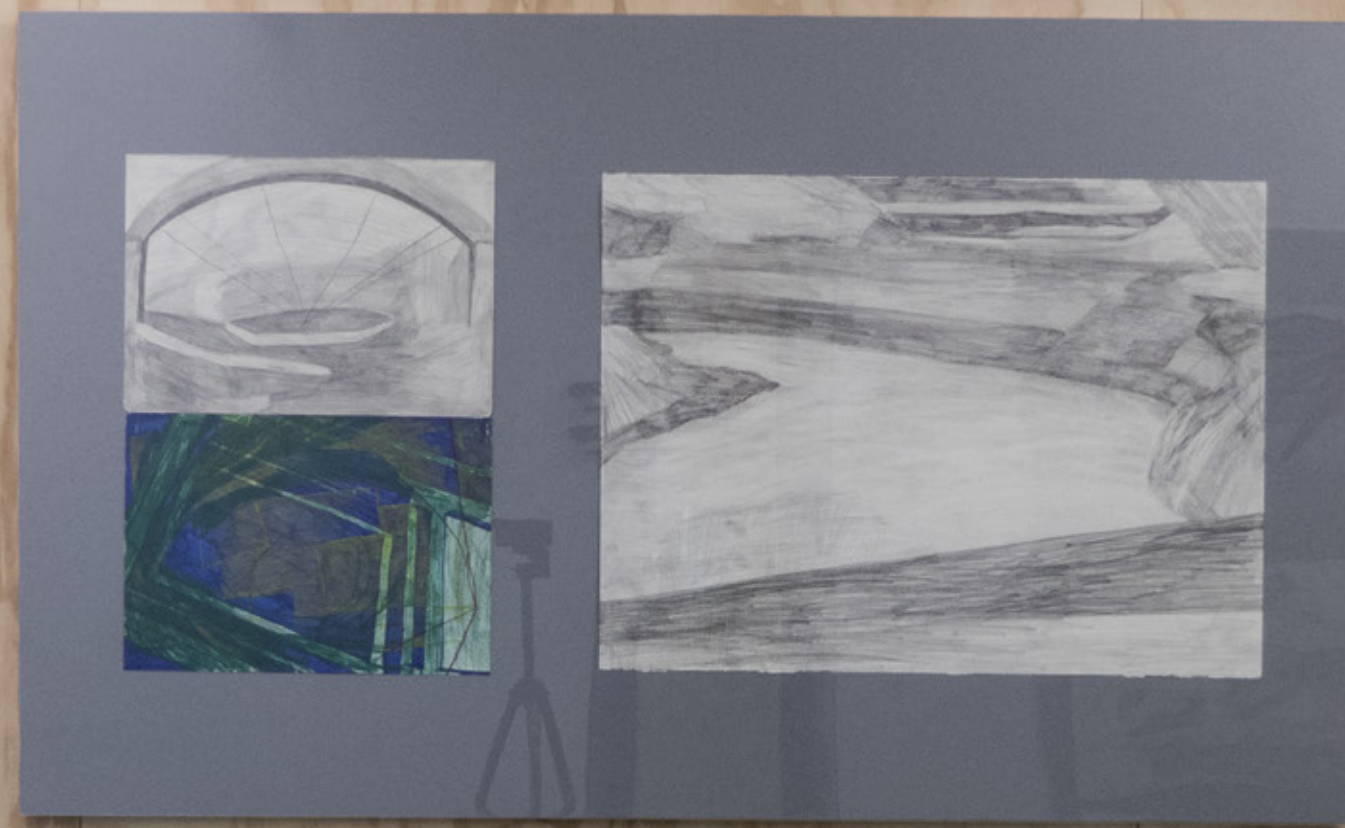


installation view, Description of a Castle

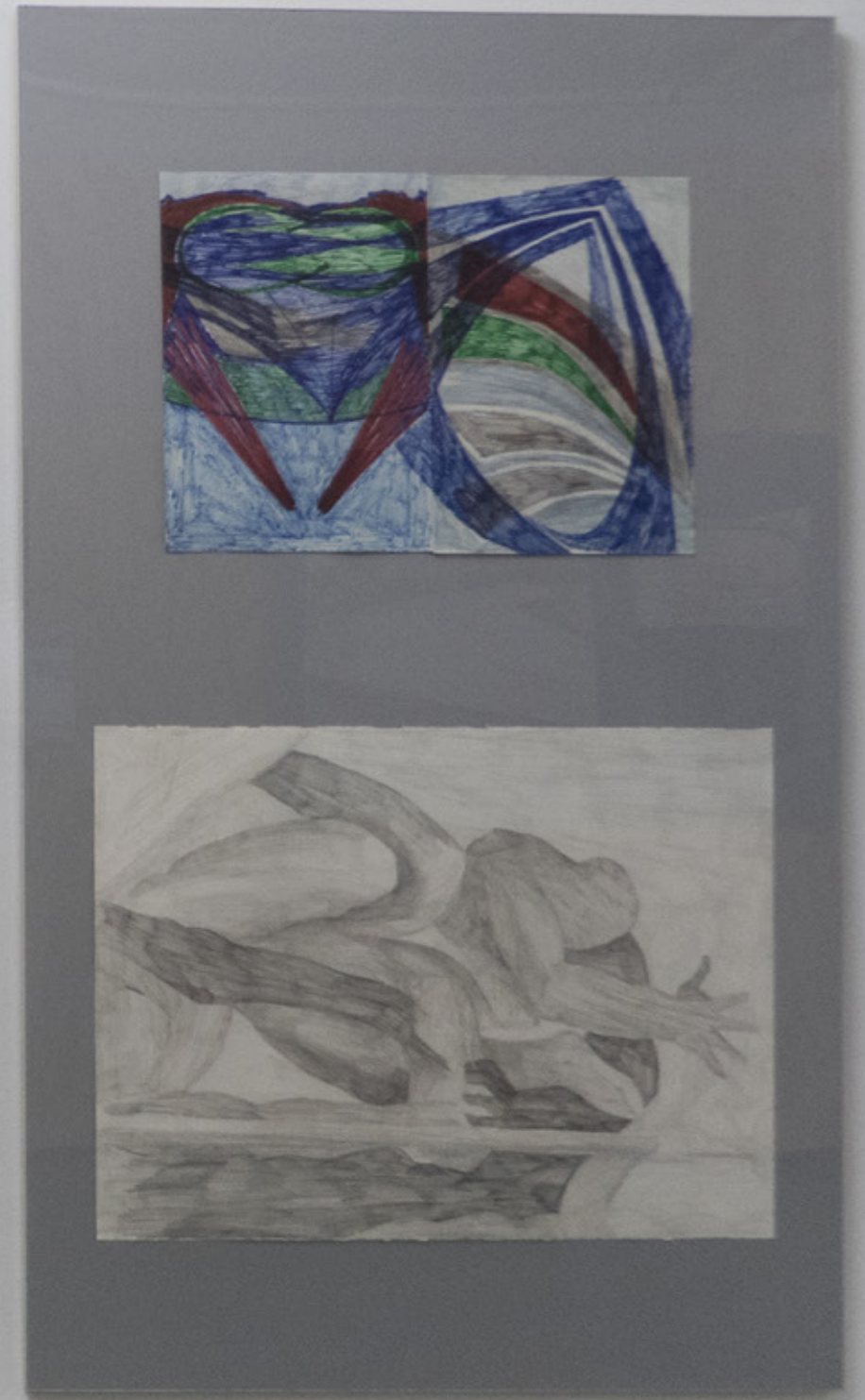


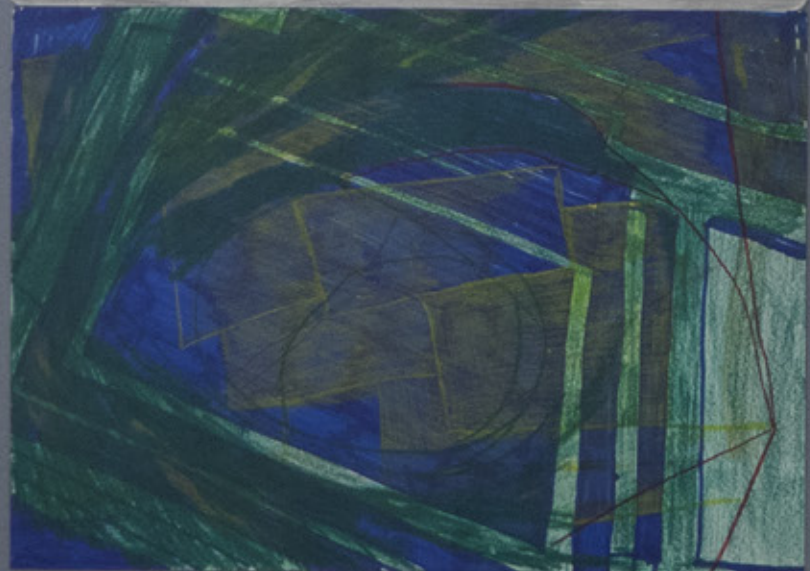
left page: installation view, Description of a Castle

this page: left: Board I / 4 Drawings, right: Board II / 3 Drawings;
both pencil, colour pencil and felt pen on paper, glass, tape, mdf, 88 x 165 cm, 2016



center: Board II / 3 Drawings, pencil, colour pencil and felt pen on paper,
glass, mdf, tape, 89 x 165 cm, 2016







previous page: Board II / 3 Drawings, pencil, colour pencil and felt pen on paper,
glass, mdf, tape, 89 x 165 cm, 2016

above: Haus IX, HD Video with sounds, looped, 12,28 min, 2015



above: Haus IX, HD Video with sounds, looped, 12,28 min, 2015
next page: Board 3 and Board 4



